



## CATALOGUE

Catálogo/Catálogo/Katalog/Catalogue/Catalogo/Katalog/Katalogor/Kataluj /Danh muc/ Katalog/カタログ/카탈로그/目錄/目錄



**DS950V** TEMPERED GLASS SIDE PANEL  
LUXURY ATX PC CHASSIS  
WITH 6" IPS DISPLAY

### 1. PRODUCT INFORMATION

1.1 Accessory Box .....	03
1.2 Driver Installation.....	04
1.3 Specification Sheet .....	05

### 2. COMPONENTS AND PORTS

2.1 Product Multi-View.....	06
2.2 Exploded View .....	07
2.3 Cable Connections .....	08
2.4 Button And I/O .....	09
2.5 Panel Disassembly And Assembly .....	10
2.6 Motherboard Installation .....	11
2.7 Fans Installed .....	12
2.8 Radiator Installed .....	13
2.9 Cpu Cooler Support .....	14
2.10 Power Supply Installation .....	15
2.11 Graphics Card Installation .....	16
2.12 Remove The Ssd / Hdd Tray .....	17
2.13 Expansion Card Installation.....	18

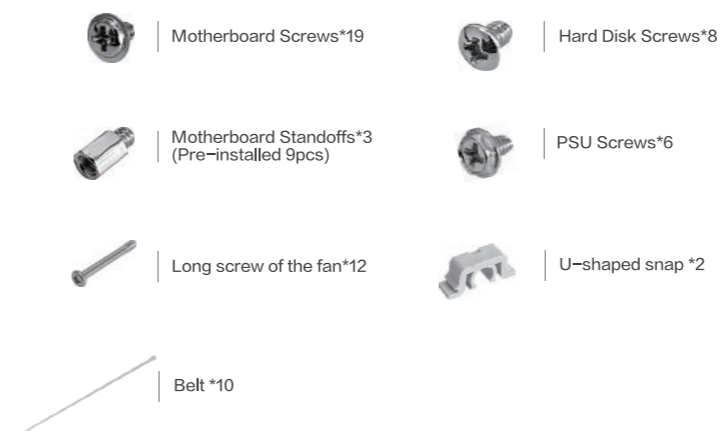
### 2.1 PRODUCT MULTI-VIEW .....

Product Multi-View/ Vistas Múltiples del Producto/ Mehrere Ansichten des Produkts/ Vues multiples du produit/ Viste multiple del prodotto/ Wiele widoków produktu/ Многократные виды продукта/ چندین دیدگاه از محصول / Nhiều góc nhìn sản phẩm/ Beberapa Tampilan Produk/ 製品マルチビュー/ 제품 멀티뷰/ 產品多視圖/ 产品多视图



### 1.1 ACCESSORY BOX .....

Caja de accesorios/ Caixa de acessórios/ Zubehörbox/ Boîte à accessoires/ Scatola degli accessori/ Pudełko na akcesoria/ Коробка для аксессуаров/ قودس/ تاراجوس/ HỘp phụ kiện/ Kotak aksesor/ アクセサリーボックス/ 액세서리 상자/ 配件盒/ 配件盒



### 1.2 DRIVER INSTALLATION .....

Instalación de Controladores/ Instalação de Drivers/ Treiberinstallation/ Installation de Pilotes/ Installazione dei Driver / Instalacja Sterowników/ Установка Драйверов/ إعدادية لبرامج التشغيل/ Cài Driver / Instal Driver / ドライバーのインストール/ 드라이버 설치/ 驅動程式安裝/ 驱动程序安装

**darkFlash DS950V control software description**  
1. The 9-pin USB port of the motherboard provides the power supply and data communication transmission of the IPS screen. Please make sure the wiring is complete before installing the software.  
2. The software can be downloaded from the official website:

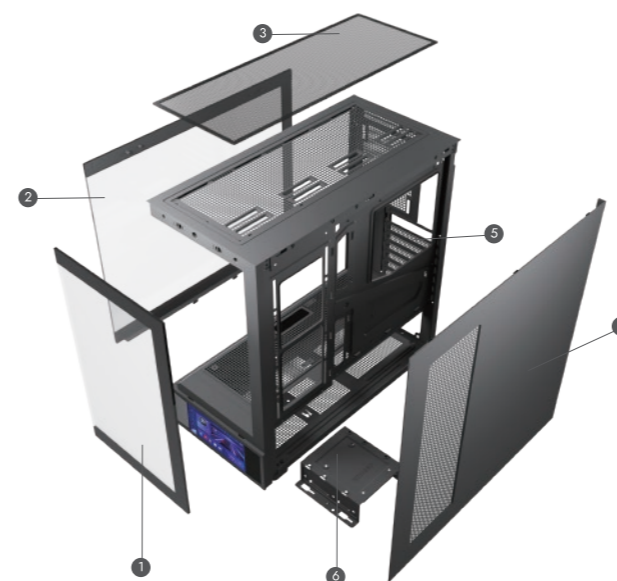
<https://www.darkflash.com/driver>



3. Desktop double-click the darkflash DS950V Setup icon to run the software.

### 2.2 EXPLODED VIEW .....

Vista despiezada/ Vista em desmontagem/ Explosionsansicht/ Vue éclatée/ Vista esplosa/ Widok eksplodowy/ Взрывной вид / دید چفت مجس / Bàn vẽ nổ / Gambar terurai/ 分解圖/ 분해도/ 分解圖/ 分解圖



No. PART NAME	
1. Front panel	5. Pcie Slot Cover
2. Left panel	6. Storage Drive Tray
3. Top dust filter	
4. Right panel	

### 1.3 SPECIFICATION SHEET .....

Hoja de Especificaciones/ Folha de Especificações/ Spezifikationsblatt/ Feuille de Spécifications/ Foglio di Specifiche / Arkusz Specyfikacji / Лист спецификаций/ 仕様書/ 仕様書/ 仕様書/ 仕様書/ 仕様書/ 仕様書

Steel Thickness :	0.5mm SPCC
Motherboard :	ATX/ Micro ATX / ITX
Overall Size :	450*222*465mm
Chassis Size:	445*220*445mm
Carton Size:	530*303*541mm
3.5" Drive Bay :	H.D.D.* 2Pcs(Max)
2.5" Drive Bay :	S.S.D.* 1Pcs(Max)
Expansion Slots :	7 Slots
VGA Clearance :	400mm Length(Max)
CPU Clearance :	180mm
Radiator System :	Rear : 120mm Top : 240/280/360mm Fan Support : Rear : 120mm*1 Top : 120mm*3 / 140mm*2 Side: 120mm*2 Bottom : 120mm*3
I/O Ports :	USB2.0*1/ USB3.0*1/ TYPE-C*1/ HD Audio/ Reset/ Power
Power Supply :	Bottom, ATX
Left Panel :	Tempered Glass

### 2.3 CABLE CONNECTIONS .....

Conexiones de cables/ Conexões de cabos/ Kabelverbindungen/ Connexions de câbles/ Connessioni dei cavi/ Połączenia kablowe/ Кабельные соединения/ تالاب و تالاب / Két nối cáp/ Konekci kabel/ ケーブル接続/ 케이블 연결/ 電纜連接/ 電纜連接



### 2.4 BUTTON AND I/O .....

Botones y E/S/ Botões e E/S/ Tasten und E/A/ Boutons et E/S/ Pulsanti e I/O/ Przyciski i wejścia/wyjścia/ Кнопки и ввод/вывод/ ប៊ុតុង និង ចេញ/ Nút bảrm và đầu vào/ ra/ Tombol dan I/O/ ボタンと入出力/ 버튼과 입출력/ 按鈕與輸入/輸出/ 按鈕與輸入/ 輸出



No. PART NAME
1. Power
2. HD Audio
3. USB2.0*1
4. USB3.0*1
5. Type-C*1
6. Reset



www.darkflash.com

Fly beyond limits!

**2.5 PANEL DISASSEMBLY AND ASSEMBLY** .....10

Panel disassembly and assembly/ Desmontaje y montaje de panel/ Desmontagem e montagem de painel / Panel demontage und montage/ Démontage et montage du panneau/ Smontaggio e montaggio del pannello/ Demontaz i montaz panelu/ Демонтаж и монтаж панели/ ھۆججەتلىرىنىڭ ئورنىنى ئۆزگەرتىش/Tháo lắp bằng điều khiển/ Pelepasan dan pemasangan panel/ パネルの取り外しと取り付け/ 패널 분해 및 조립/ 面板拆装/ 面板拆装



Disassembly and assembly of the side glass panel

Front panel disassembly and assembly

Side panel disassembly and assembly

**2.6 MOTHERBOARD INSTALLATION** .....11

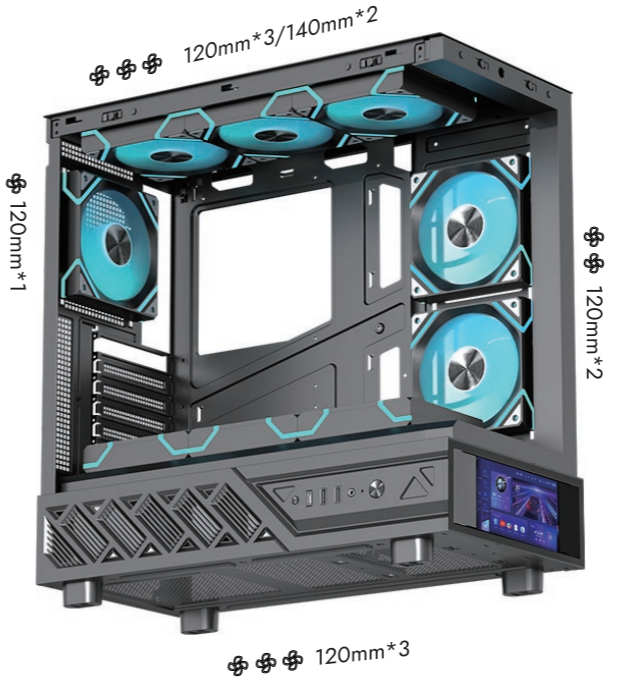
Instalación de la placa base/Instalação da placa-mãe/Installation der Hauptplatine/Installation de la carte mère/ Installazione della scheda madre/Instalacja płyty głównej/Установка материнской платы/ ھۆججەتلىرىنىڭ ئورنىنى ئۆزگەرتىش/ ھۆججەتلىرىنىڭ ئورنىنى ئۆزگەرتىش/ Láp đặt bo mạch chủ/ Pemasangan papan induk/ マザーボードの取り付け/ 메인보드 설치/ 主板安裝/ 主板安裝



Support ATX/M-ATX/ITX Motherboard

**2.7 FANS INSTALLED** .....12

Instalación de ventiladores/Instalação de ventiladores/Installation von Lüftern/Installation des ventilateurs/ Installazione delle ventole/Instalacja wentylatorów/Установка вентиляторов/ ھۆججەتلىرىنىڭ ئورنىنى ئۆزگەرتىش/ ھۆججەتلىرىنىڭ ئورنىنى ئۆزگەرتىش/ Láp đặt quạt tản nhiệt/ Pemasangan kipas/ ファンの取り付け/ 팬 설치/ 風扇安裝/ 風扇安裝



**2.8 RADIATOR INSTALLED** .....13

Instalación del radiador/Instalação do radiador/Installation des Kühlers/Installation du radiateur/ Installazione del radiatore/Instalacja chłodnicy/Установка радиатора/ ھۆججەتلىرىنىڭ ئورنىنى ئۆزگەرتىش/ ھۆججەتلىرىنىڭ ئورنىنى ئۆزگەرتىش/ Láp đặt bộ tản nhiệt/ Pemasangan radiator/ ラジエーターの取り付け/ 라디에이터 설치/ 散热器安裝/ 散热器安裝



**2.9 CPU COOLER SUPPORT** .....14

CPU Cooler Support/ Soporte para Cooler de CPU /Suporte para Cooler de CPU/ CPU-Kühler-Unterstützung/ Support pour Cooler de CPU/ Supporto per Cooler CPU/ Wsparcie dla chłodnicy CPU/ Поддержка кулера для CPU/ ھۆججەتلىرىنىڭ ئورنىنى ئۆزگەرتىش/ ھۆججەتلىرىنىڭ ئورنىنى ئۆزگەرتىش/ Hỗ trợ Cooler CPU/ Dukungan Cooler CPU/ CPU 쿨러-대응/CPU 쿨러 지원/CPU 散热器支援/ CPU 散热器支持



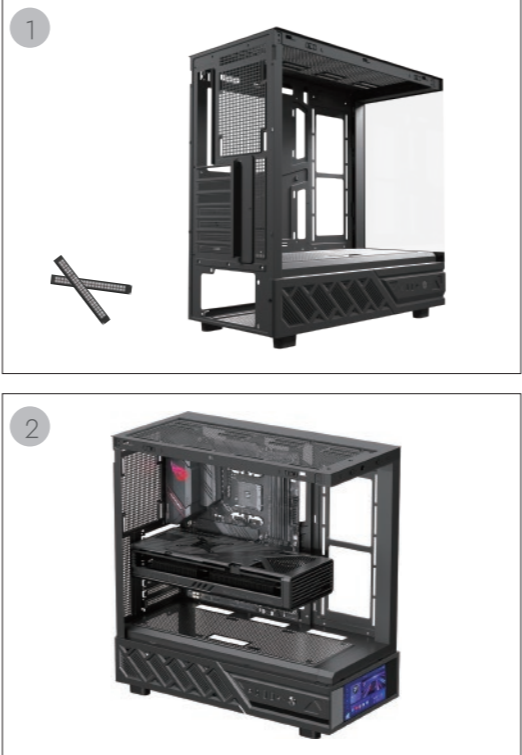
**2.10 POWER SUPPLY INSTALLATION** .....15

Instalación de la fuente de alimentación/Instalação da fonte de alimentação/Installation des Netzteils/ Installation de l'alimentation électrique/Installazione dell'alimentatore/Instalacja zasilacza/ Установка блока питания/ ھۆججەتلىرىنىڭ ئورنىنى ئۆزگەرتىش/ ھۆججەتلىرىنىڭ ئورنىنى ئۆزگەرتىش/ Láp đặt nguồn điện/ Pemasangan power supply /電源ユニットの取り付け/ 파워 서플라이 설치/ 電源供應器安裝/ 电源安裝



**2.11 GRAPHICS CARD INSTALLATION** .....16

Instalación de la tarjeta gráfica/Instalação da placa gráfica/Installation der Grafikkarte/Installation de la carte graphique/ Installazione della scheda grafica/Instalacja karty graficznej/Установка видеокарты/ ھۆججەتلىرىنىڭ ئورنىنى ئۆزگەرتىش/ ھۆججەتلىرىنىڭ ئورنىنى ئۆزگەرتىش/ Láp đặt card đồ họa/ Pemasangan kartu grafis/ グラフィックカードの取り付け/ 그래픽 카드 설치/ 顯示卡安裝/ 显卡安裝

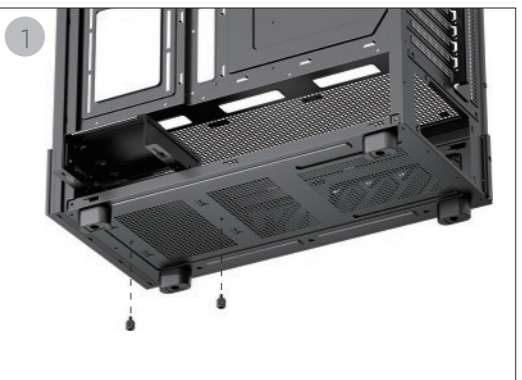


Disassemble the PCIe card

VGA Clearance : 400mm Length(Max)

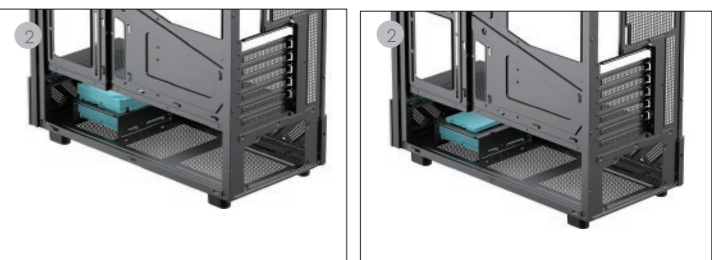
**2.12 REMOVE THE SSD / HDD TRAY** .....17

Retira la bandeja del SSD/HDD/Remove a bandeja do SSD/HDD/Entfernen Sie das SSD/HDD-Fach/ Retirez le plateau du SSD/HDD/ Rimuovere il vassoio SSD/HDD/ Wyjmij tacę SSD/HDD/ Снимите лоток для SSD/ HDD/ ھۆججەتلىرىنىڭ ئورنىنى ئۆزگەرتىش/ ھۆججەتلىرىنىڭ ئورنىنى ئۆزگەرتىش/ Tháo khay SSD/HDD/ Lepaskan baki SSD/HDD/ SSD/HDD 트레이를 제거하지/ 移除 SSD/HDD 托盤/ 移除 SSD/HDD 托盤



**2.13 HARD DISK INSTALLATION** .....18

Instalación de Disco Duro/ Instalação de Disco Rígido/ Festplatteninstallation/ Installation de Disque Dur/ Installazione di Disco Rigido/ Instalacja Dysku Twardego/ Установка Жёсткого Диска/ ھۆججەتلىرىنىڭ ئورنىنى ئۆزگەرتىش/ ھۆججەتلىرىنىڭ ئورنىنى ئۆزگەرتىش/ Cài đặt Đĩa Cứng/ Instalasi Hard Disk/ ハードディスクの取り付け/ 하드디스크 설치/ 硬碟安裝/ 硬盘安裝



HDD x 2

HDD x 1 + SSD x 1